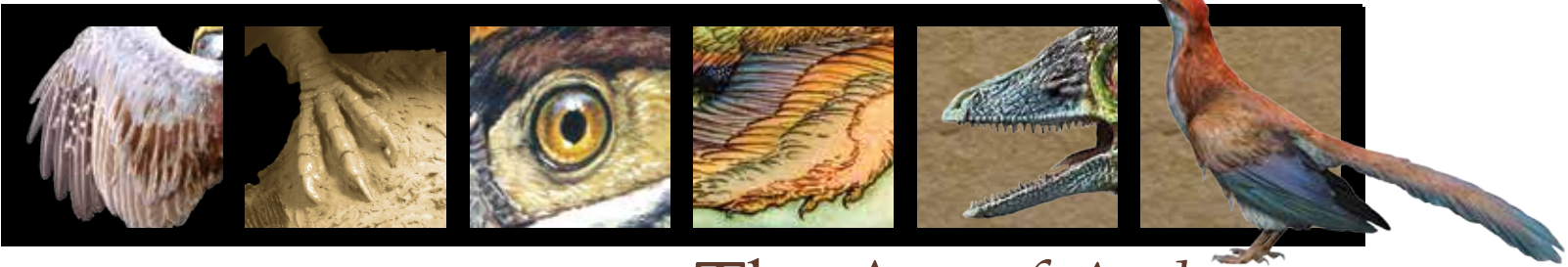


Dinosaurs Take Flight



The Art of *Archaeopteryx*

Produced in partnership with



AND

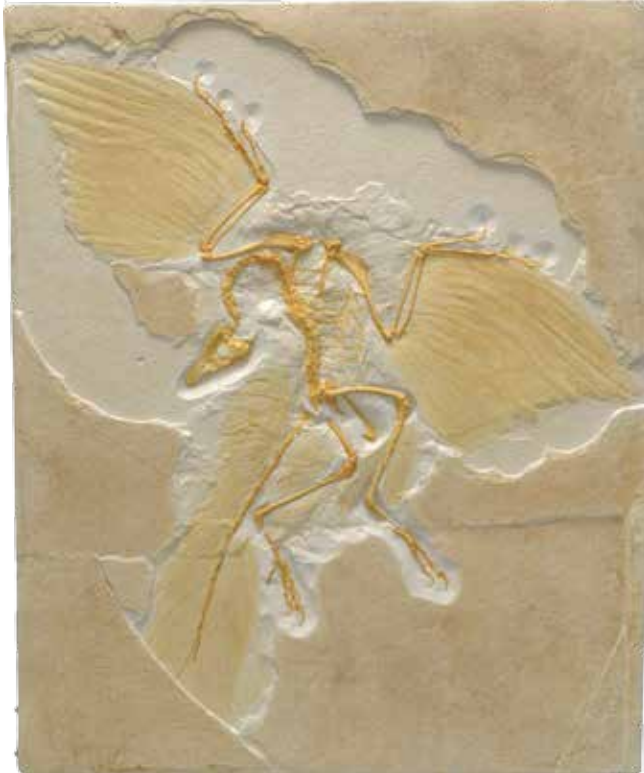
Yale PEABODY MUSEUM
OF NATURAL HISTORY

Email: Curator@spexhibitions.com Visit our website at www.spexhibitions.com
www.DinosaursTakeFlight.com



The Exhibit

Dinosaurs Take Flight The Art of *Archaeopteryx*



Dinosaurs will be taken to new heights in this upcoming traveling exhibition—engaging visitors at the intersection of art and science. Renowned artists from around the world are providing a glimpse into their studios and processes as they bring this iconic “missing link” back to life. Silver Plume Exhibitions, the production team behind the acclaimed traveling exhibition “Hatching the Past,” is teaming up with the design and scientific minds from the Yale Peabody Museum of Natural History to bring this unique exhibition to you.

Archaeopteryx provides a critical bridge between dinosaurs and birds. Starting with the initial discovery in 1861, *Archaeopteryx* has been an integral part of the discussion of evolution, the origin of birds, and the origin of flight. Scientists from across the globe have conducted extensive research to better understand this “missing link,” and studies continue still. How did it fly? Why did feathers first evolve? Paleo-artists are the visionaries for these scientists, giving a vibrant, colorful life to these prehistoric animals and inspiring the scientific imagination of young and old alike.

Silver Plume Exhibitions has approached some of the top paleo-artists of today and asked them to give us a window into the world of bringing an extinct creature to life. The resulting collection of all new art and science is both beautiful and educational—it is “Dinosaurs Take Flight.”

Above
Berlin Specimen - Archaeopteryx lithographica
Arguably the most important and beautiful fossil ever discovered. Research grade replica part and counter part included in exhibition display.

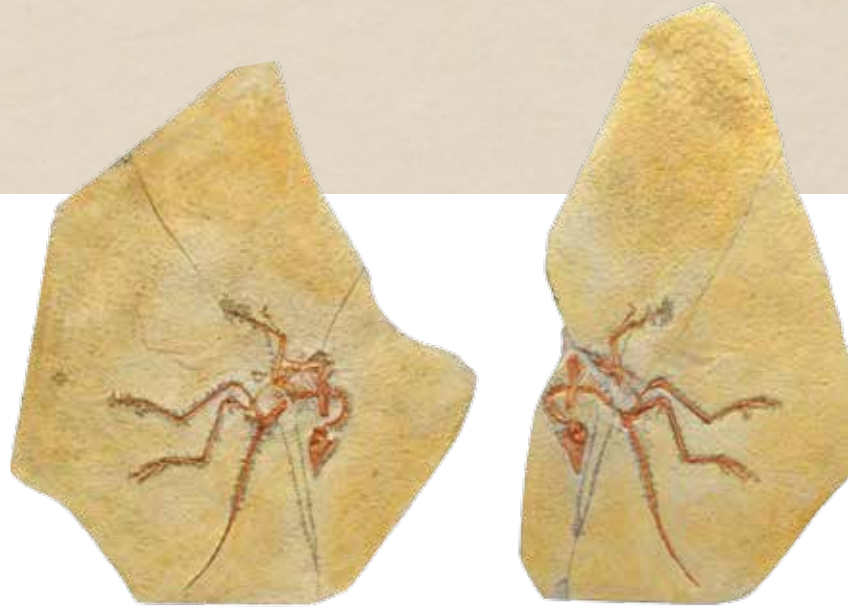


Specimens

Archaeopteryx

The history of *Archaeopteryx* is rich with debate and controversy. Originally described in 1862, the "London" specimen was the first example of a possible "missing link" between reptiles and birds. The specimen was, and still is, instrumental in the great story of birds' evolution from dinosaurs.

Exhibition includes high quality research grade replicas of eight *Archaeopteryx* specimens. Associated text describes the history of discovery and scientific value.

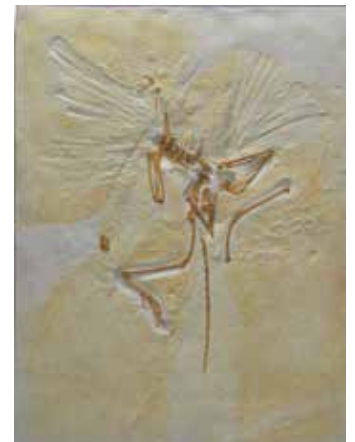


Eichstätt Specimen
Archaeopteryx lithographica



Haarlem Specimen
Archaeopteryx lithographica

Originally found in 1855, it was described as a pterosaur in the collections of the Teylers Museum until 1972 when Yale professor John Ostrom recognized it for what it really was.



London Specimen
Archaeopteryx lithographica



Solnhofen Specimen
Archaeopteryx lithographica



Berlin Specimen
Archaeopteryx lithographica



Specimens

Archaeopteryx

Archaeopteryx, although not as well known as *T. rex*, is infinitely more important in the world of science. In Darwin's time it was the fossil that changed the world. Now it is time again for this small, feathered dinosaur to gain public attention in a big way.

Exhibition discusses the life and environment with a display of other flora and fauna from the Solnhofen lagoon. Elements include replicas of pterosaurs, *Compsognathus*, and a mounted *Archaeopteryx* skeleton, as well as a collection of real fossils with dragonflies, insects, squid, shrimp, horseshoe crabs, fish, brittle stars, and others.



Maxburg Specimen
Archaeopteryx lithographica



Thermopolis Specimen
Archaeopteryx lithographica
Exhibition features the first touring replica of the Thermopolis Specimen.



Munich Specimen
Archaeopteryx bavaria



Squid
Belemnotherutis sp.
(Real fossil)



Dragonfly
Libellulum sp.
(Real fossil)



Brittle star
Ophiopetra sp.
(Real fossil)



Fish
Gyrodus sp.
(Real fossil)



Shrimp
Ager sp.
(Real fossil)



Horseshoe crab
Mesolimulus sp.
(Real fossil)

This specimen is a "Death March" plate with the final steps of this animal clearly fossilized.



The Artists

JULIUS T. CSOTONYI



Julius T. Csotonyi is an MSc graduate of Ecology and Environmental Biology (University of Alberta) and a PhD graduate in microbiology (University of Manitoba). His scientific background has impelled him to strive to restore, as realistically as possible, the bizarre environments that earth has hosted in its deep past. His artwork has appeared in numerous books, *Dinosaur Art: The World's Greatest Paleoart* (White, 2012), *Ultimate Dinosaurs: Giants from Gondwana* (Evans and Vavrek, 2012), and was featured in *The Paleoart of Julius Csotonyi* (Csotonyi and White, 2014). Most of Julius' artwork consists of commissions for museum exhibits and supportive imagery for scientific research publications. For this work, Julius has received the Society of Vertebrate Paleontology's Lanzendorf PaleoArt Prize for 2-Dimensional Art three times.



DENNIS J. WILSON



Dennis J. Wilson received his BFA in sculpture and painting from Rhode Island School of Design in 1988. He worked for several years at the American Museum of Natural History as a preparator and reconstruction artist. While at AMNH, he refined his skills while expanding his knowledge of the natural sciences under the guidance of museum scientists. In 1995, Dennis founded Pangaea Designs, a company that specializes in custom exhibitory work and scientifically accurate life reconstructions of animals both extinct and extant.



MARK HALLETT



Mark Hallett has been specializing as a paleo-artist since 1974. His work has appeared in *Life*, *Smithsonian*, *Natural History* and *National Geographic* as well as scientific journals and popular books. Mark was chosen as artist consultant by Steven Spielberg to help create the dinosaurs of *Jurassic Park*, and later created many of the scenes and leading dinosaur characters for Disney's feature film, *Dinosaur*. Hallett's work on display in "Dinosaurs Take Flight" was featured in the book *The Puzzle of the Dinosaur Bird*.



GARY STAAB



Gary Staab is a master of recreating animals from past and present. He is the founder of Staab Studios which has become known world wide for their life size sculptures. From a *Brachiosaurus* to a bird, nothing is too big or too small. Staab has produced work for National Geographic Society, The Denver Museum, The Smithsonian Institute, and many others. He has worked on many exhibit projects such as "Super Croc" and "King Tut: Return of the King." Gary is also a four time winner of the Lanzendorf PaleoArt Prize.



LUIS V. REY



Luis V. Rey is a Spanish-Mexican artist residing in London. He received his visual Arts MA from San Carlos Academy (UNAM), Mexico. Luis has been a professional surrealist, multi-media illustrator, and amateur paleontologist for more than 35 years. He is currently devoting most of his time to accurate but daring paleontological reconstructions. He has collaborated with authors like Henry Gee on *Field Guide to Dinosaurs* and paleontologists Thomas Holtz on *Dinosaurs: The Most Complete Up-to-Date Encyclopedia* and Robert T. Bakker on *Golden Book of Dinosaurs*.



WILLIAM STOUT



William Stout was raised in Los Angeles and won a full California State Scholarship to the California Institute of the Arts (CalArts) where he obtained his Bachelor's Degree. William is known for his science fiction and fantasy paintings as well as his paleo-art. His work has been featured in many books, movies, and traveling exhibitions. Michael Crichton acknowledged Stout's work as an inspiration for his book *Jurassic Park*. He was featured in "Dinosaurs Past and Present," a fantastically successful exhibition about the history of paleo art. Stout has journeyed to Antarctica and Patagonia. These trips to Antarctica have led to an adventure of one man shows and book projects which help raise public awareness to the continent's rich abundance of life. Books by Stout include *William Stout: Prehistoric Life Murals*, *Dinosaur Discoveries*, and *New Dinosaurs A to Z*.



Additional Resources

MERCHANDISE

- Books are available from most artists
- Scientific books about *Archaeopteryx*
- Prints (framed and unframed)
- Poster and postcards printed with exhibit name and information
- Miscellaneous *Archaeopteryx* merchandise (coins, toys, etc.)
- Solnhofen limestone decorative items

PRESS PACKET

Includes standard advertising templates, exhibit marketing text and social media forums.

DESIGNER PACKET

Color pallet, customized floor plan, graphics, logos, and fonts.



Hoatzin Archaeopteryx
Luis V. Rey
Acrylic on art board



Archaeopteryx and Modern Birds
Mark Hallett
Gouche on coldpress board



Archaeopteryx Chasing Insect
William Stout

Programming and Education

POTENTIAL PROGRAMMING

Artists are all willing to do lectures, workshops, and book signings in association with the exhibit by separate arrangement. A list of artist contact information and lecture or workshop specifics will be provided upon request.

EDUCATOR PACKET

Classroom activities aligned to national standards, adventure guide for use in exhibit hall.

DOCENT GALLERY GUIDE

Informational packet to assist volunteers, docents, and educators in giving informative guided tours.



Archaeopteryx
Dennis J. Wilson
Sculpture in mixed media



Final Landing
Julius T. Csotonyi
Digital painting in progress